

JULY 28, 2009 REVISIONS

- CHANGE ROOF LINES TO INCLUDE FRONT HIP DORMERS
- GARAGE DOORS - ARCHED CARRIAGE HOUSE DOORS
- FRONT DOOR CHANGES TO TRADITIONAL COUNTRY DOORS
- ALL CEDAR SHINGLE EXTERIOR
- SECOND FLOOR RAILING DESIGN

AUGUST 31, 2009 REVISIONS

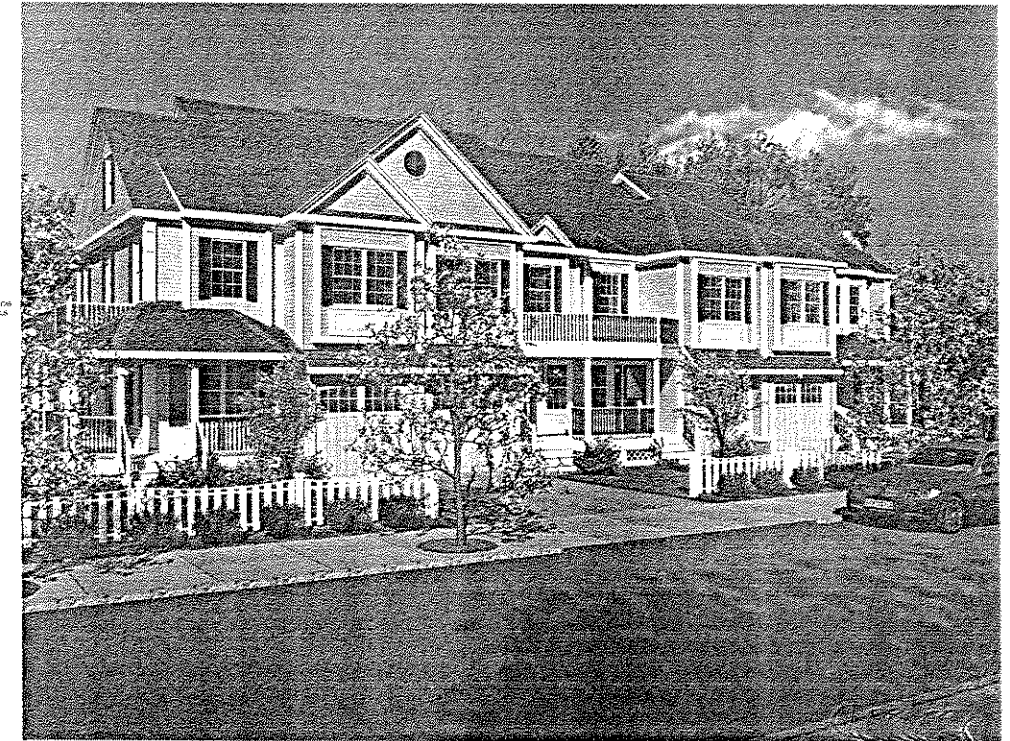
- CHANGE UNIT 1 FRONT ENTRANCE TO FACE BELMONT STREET
- ADD FULL FRONT PORCH ON BELMONT STREET WITH 8" TURNED COLUMNS
- ADD SECOND FLOOR RAILING SYSTEM
- USE ALL CEDAR SHINGLE SIDING TOWARDS BELMONT STREET

SEPTEMBER 15, 2009

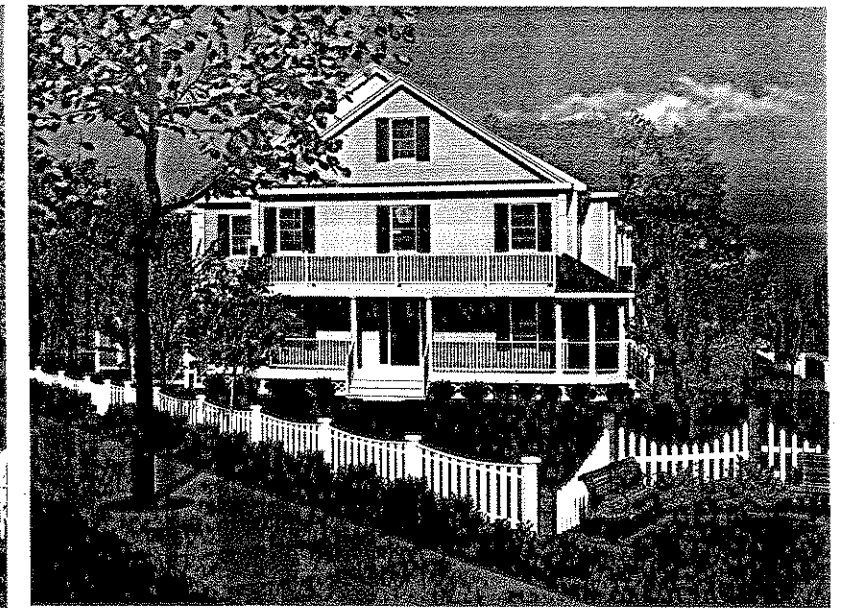
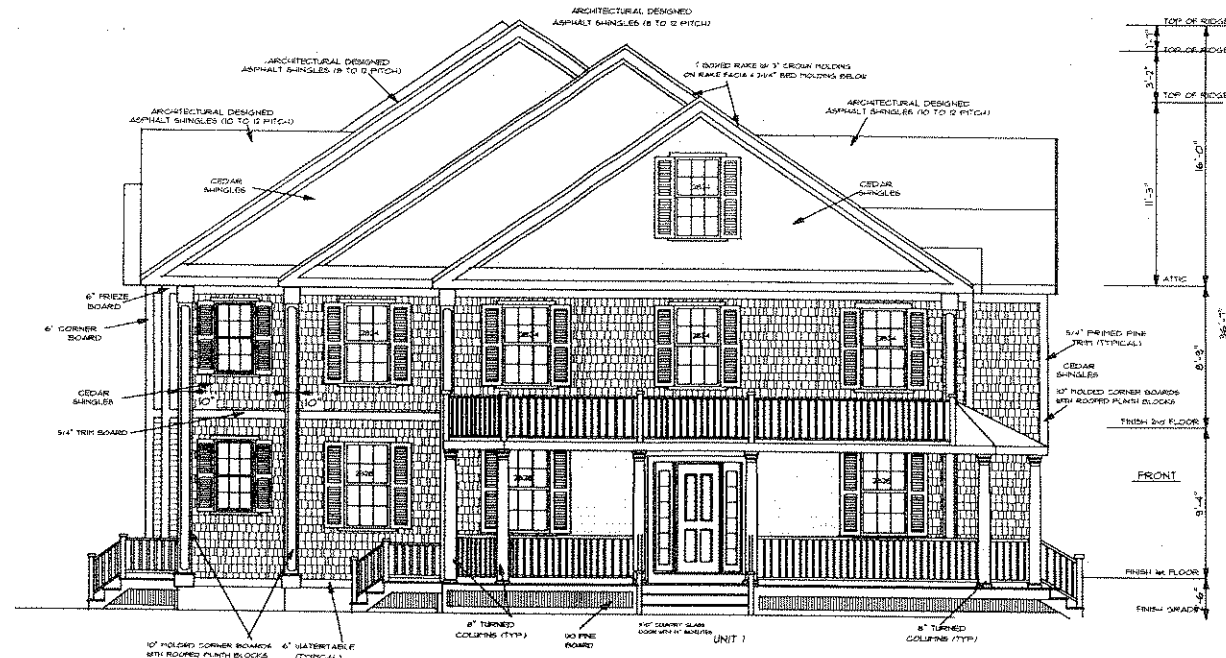
- USE OF TURNED COLUMNS ON ALL ROOFED PORCHES
- ADD 2ND FLOOR OCTAGONAL BAY IN 12 OAKLEY ROAD
- MODIFY ALL ROOFED PORCHES TO OCTAGONAL DESIGN
- ADD CROWN MOLDING AND BED MOLDING TO ALL BOX RAKE FACIA
- MODIFY CORNER BOARDS TO 10" MOLDED BOARDS WITH ROOFED FLINTH BLOCKS
- ADD FRONT GABLE ROUND WINDOW

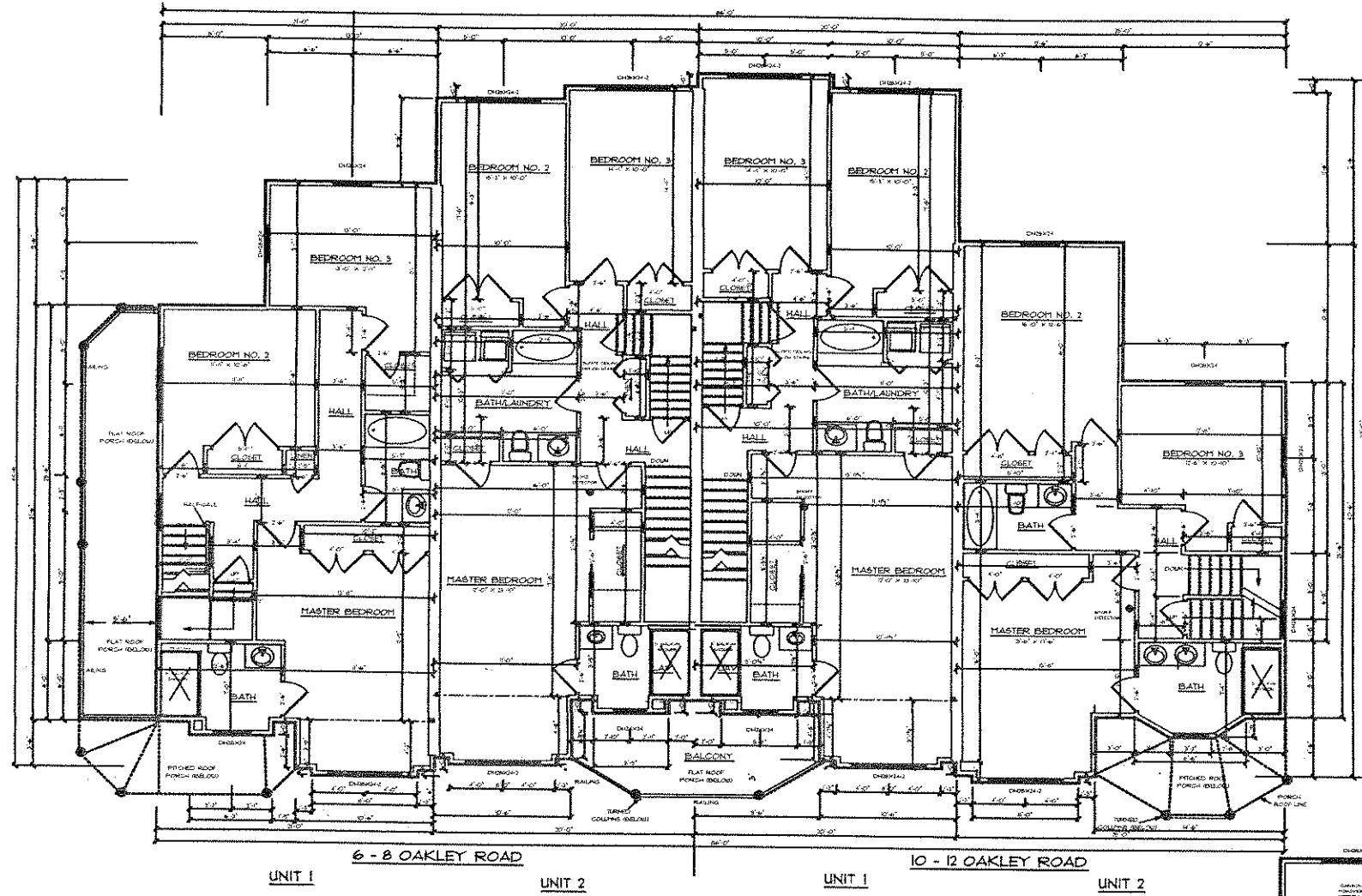
**FRONT ELEVATION**

SCALE: 1" = 5'



**LEFT SIDE ELEVATION - FACING BELMONT STREET**

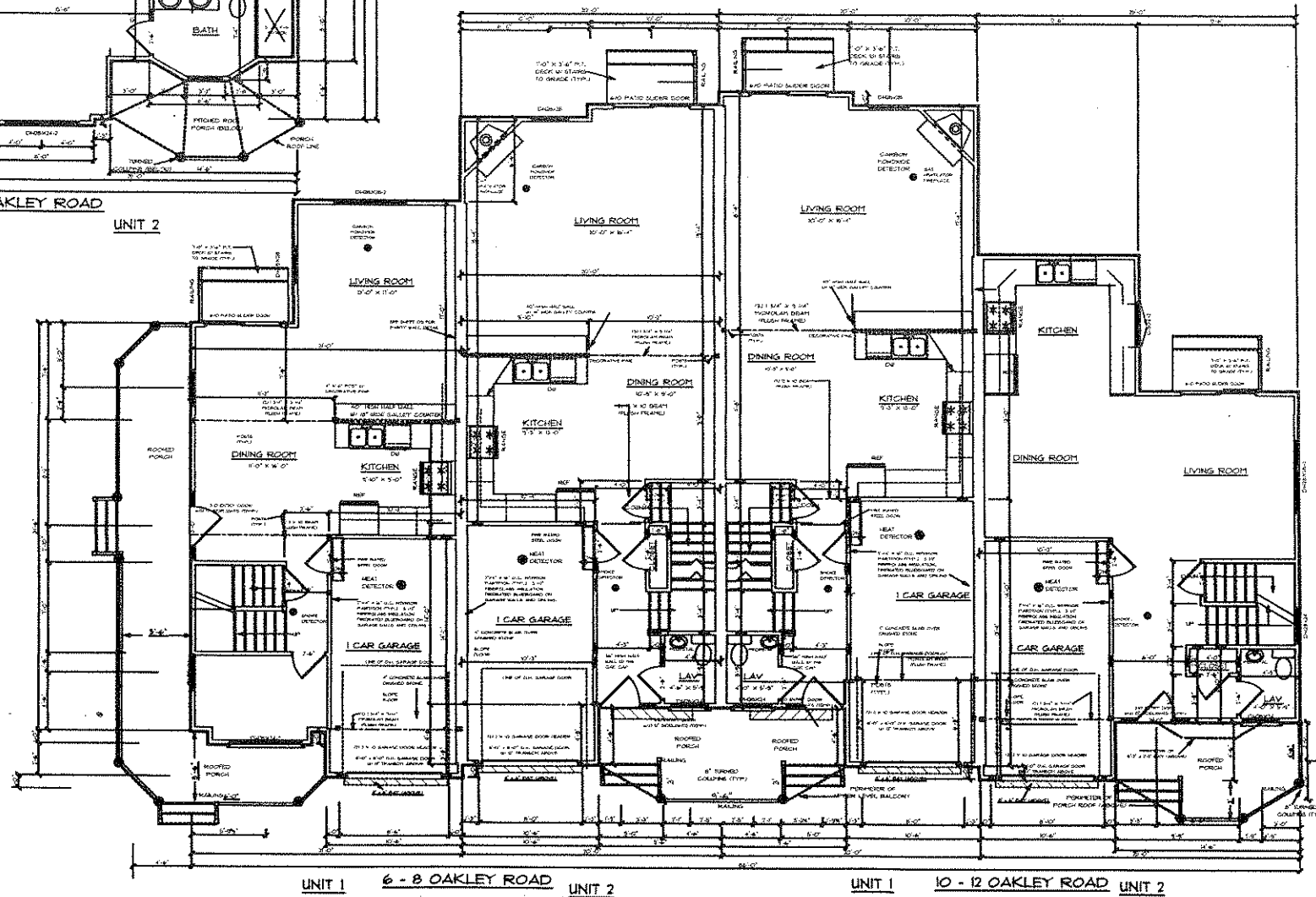




PROPOSED PLAN FOR:  
 6 - 12 OAKLEY ROAD  
 BELMONT, MASSACHUSETTS  
 LOT 1 - UNITS 1 & 2    LOT 2 - UNITS 1 & 2  
 SECOND FLOOR PLAN  
 DATE: APRIL 9, 2009  
 REVISION: AUG. 26, 2009 & SEPT. 10, 2009  
 NORTH SHORE CONSTRUCTION & DEVELOPMENT, INC.    4 OF 6

UNIT 1    6 - 8 OAKLEY ROAD    UNIT 2    UNIT 1    10 - 12 OAKLEY ROAD    UNIT 2

PROPOSED PLAN FOR:  
 6 - 12 OAKLEY ROAD  
 BELMONT, MASSACHUSETTS  
 LOT 1 - UNITS 1 & 2    LOT 2 - UNITS 1 & 2  
 FIRST FLOOR PLAN  
 SCALE: 1/4"=1'-0"    DATE: AUGUST 31, 2009  
 REVISION: SEPT. 10, 2009  
 NORTH SHORE CONSTRUCTION & DEVELOPMENT, INC.    2 OF 6



UNIT 1    6 - 8 OAKLEY ROAD    UNIT 2    UNIT 1    10 - 12 OAKLEY ROAD    UNIT 2